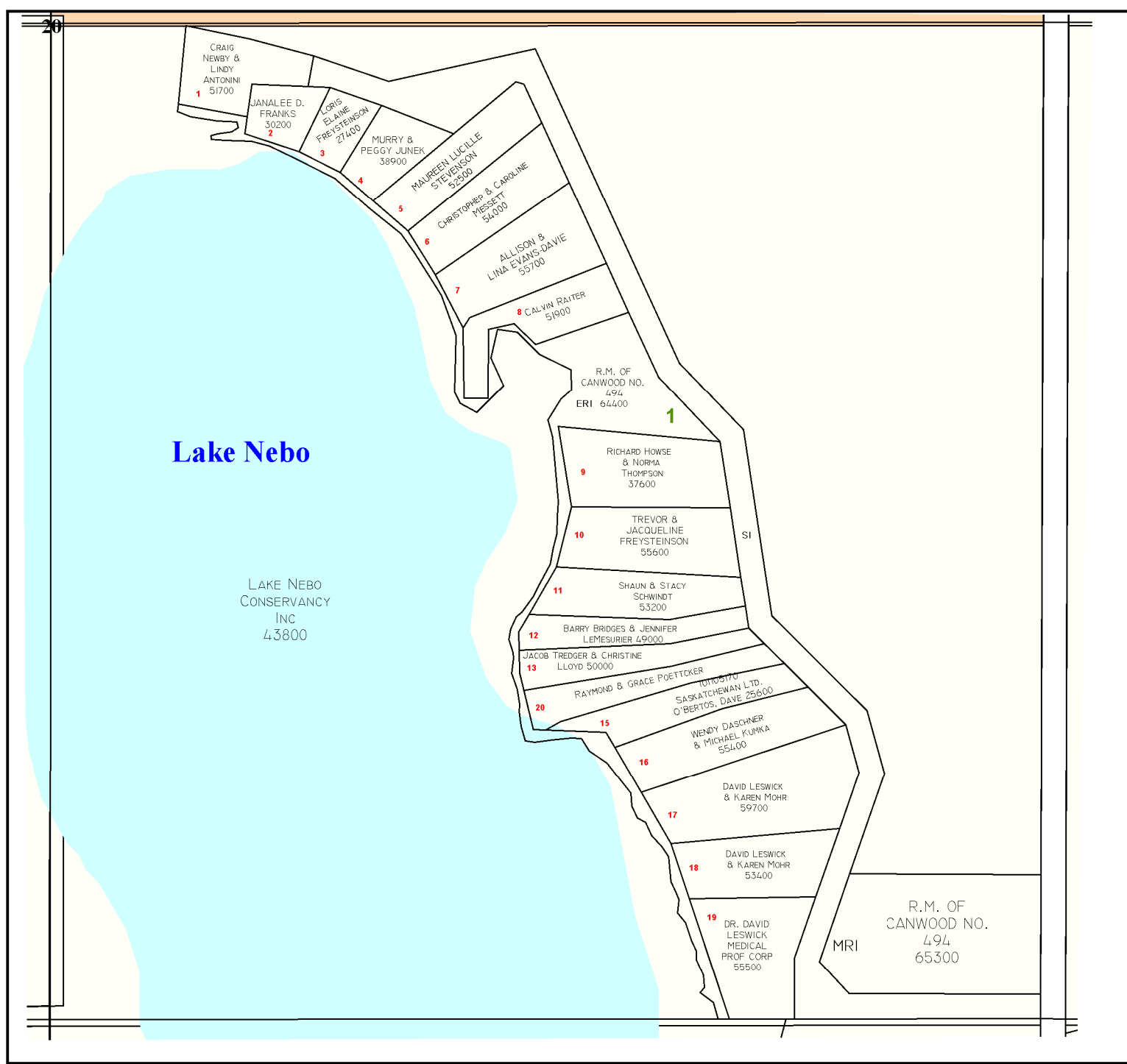


RURAL MUNICIPALITY CANWOOD NO. 494

WEST OF 3rd MERIDIAN

Location Plan

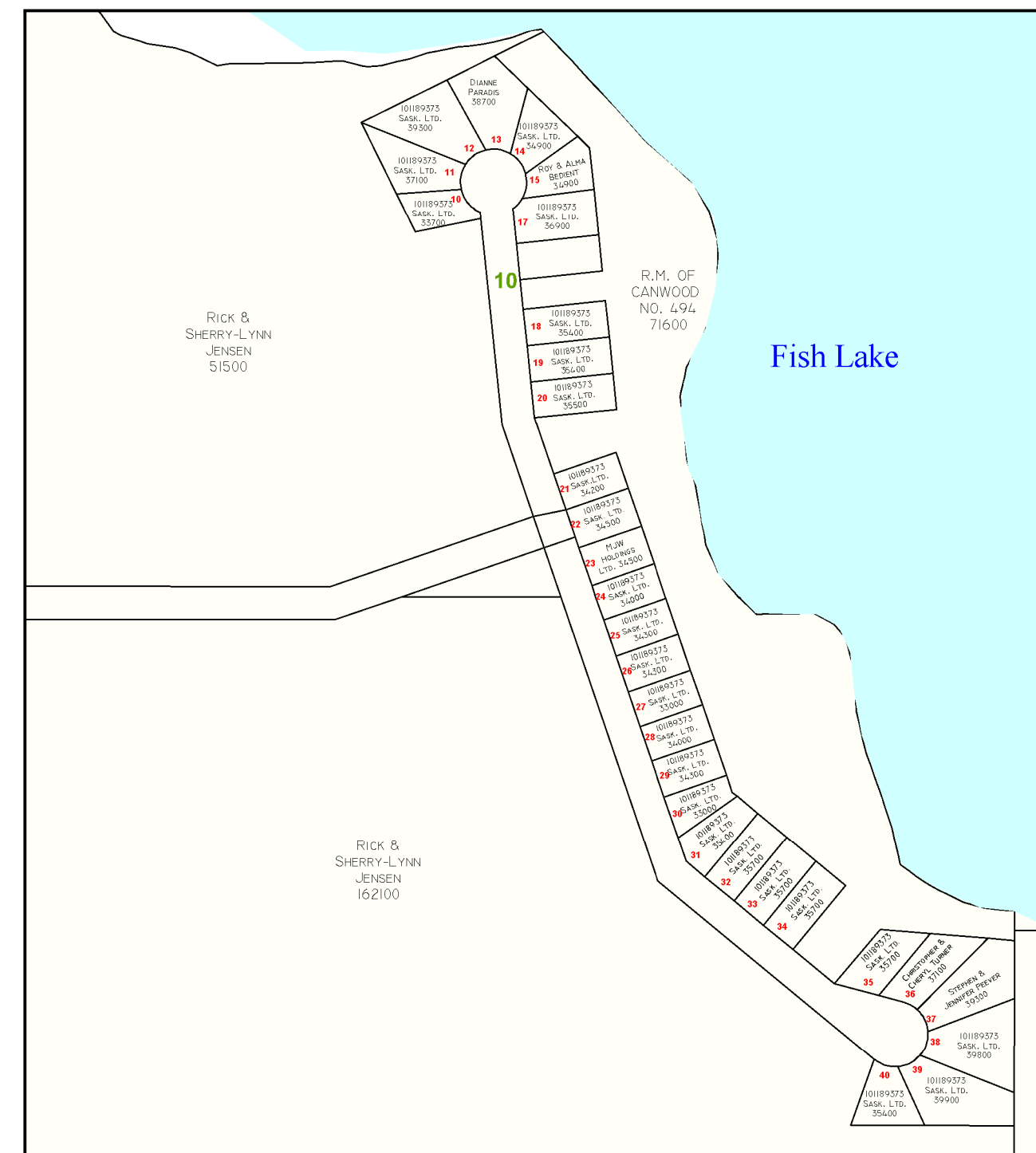
1 LAKE NEBO
Location SE 20 - 50 - 06 W3



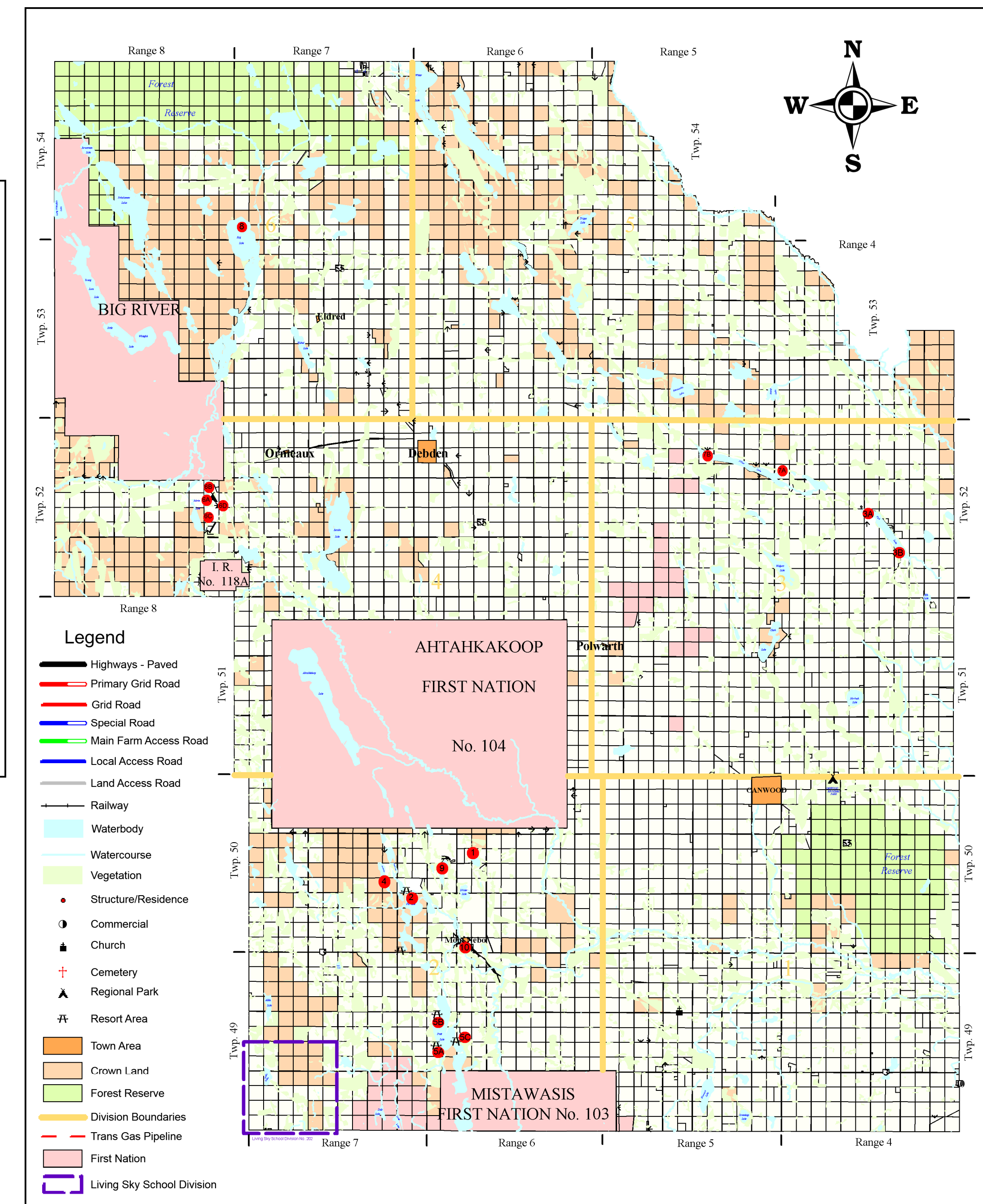
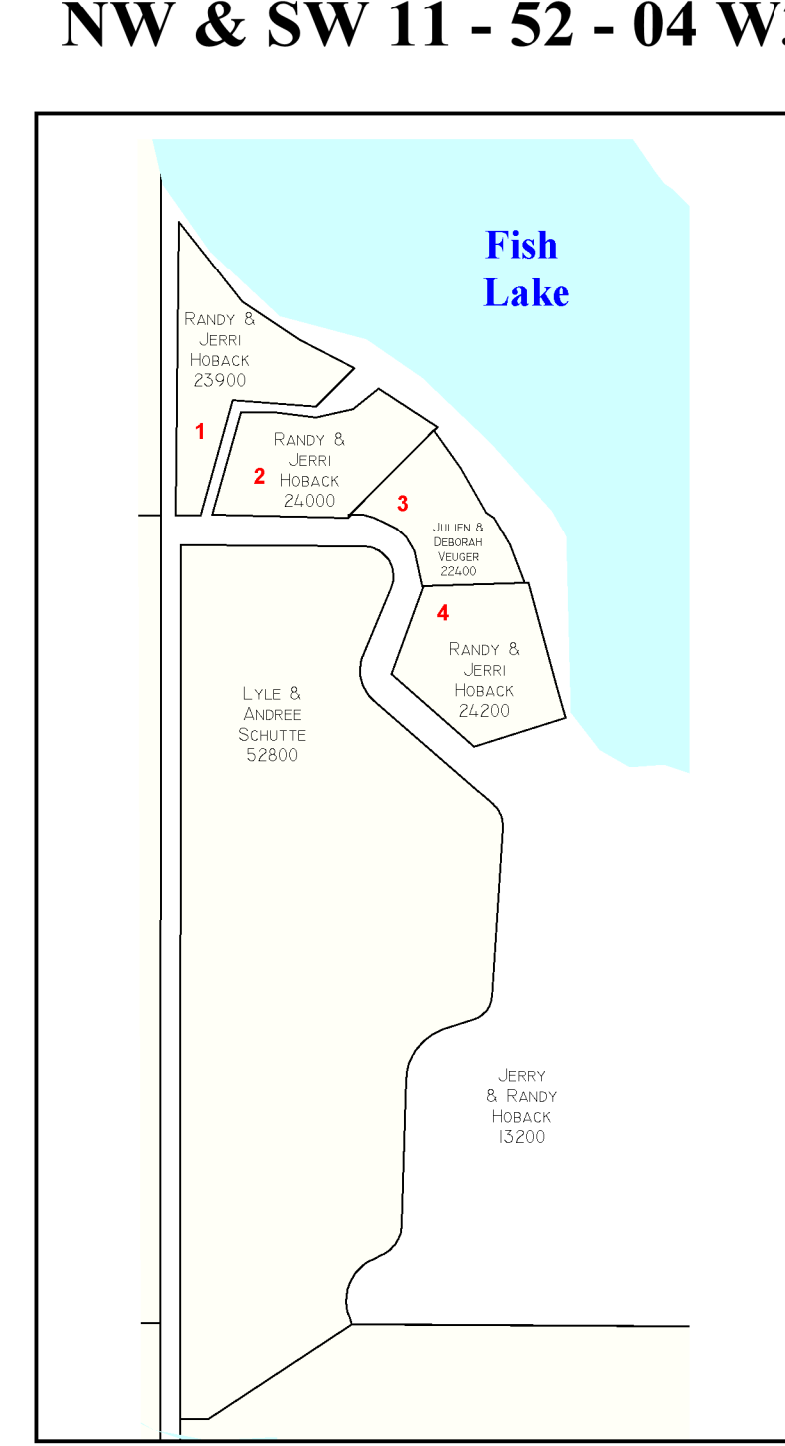
2 FUR LAKE
Location SW 13 - 50 - 07 W3



3A FISH LAKE
Location NW & SW 15 - 52 - 04 W3



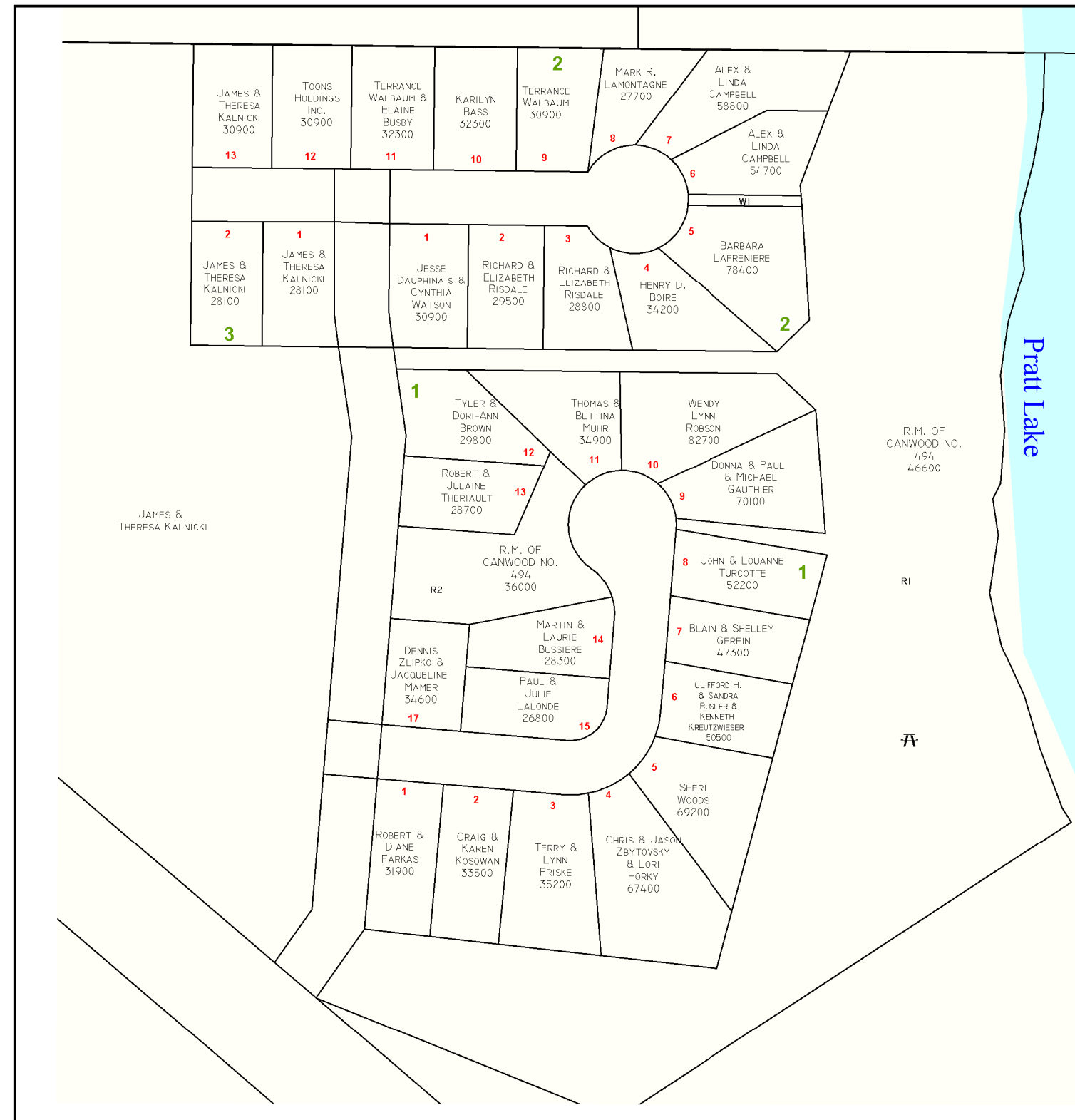
3B FISH LAKE
Location NW & SW 11 - 52 - 04 W3



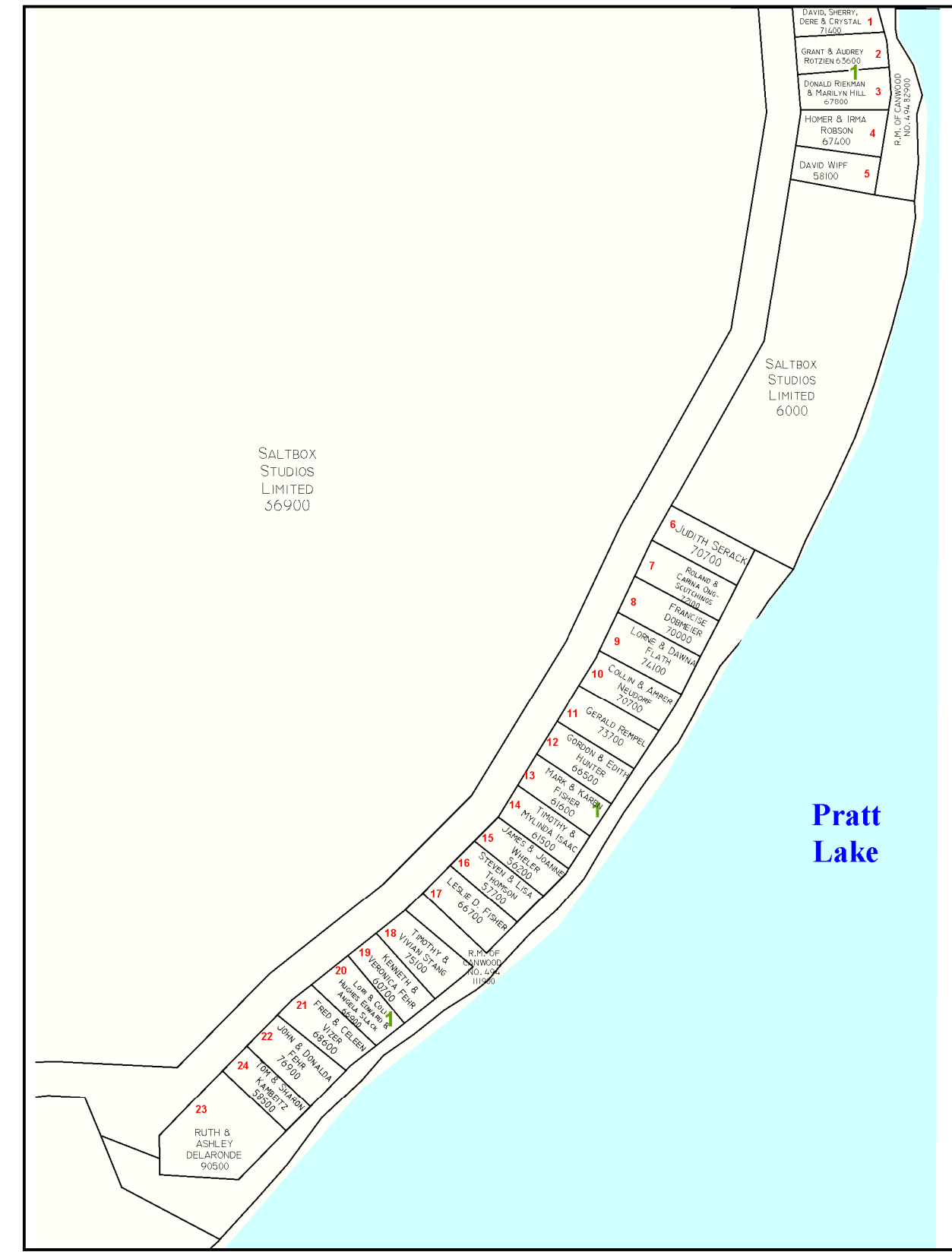
4 SAWMILL LAKE
Location NE 14 - 50 - 07 W3



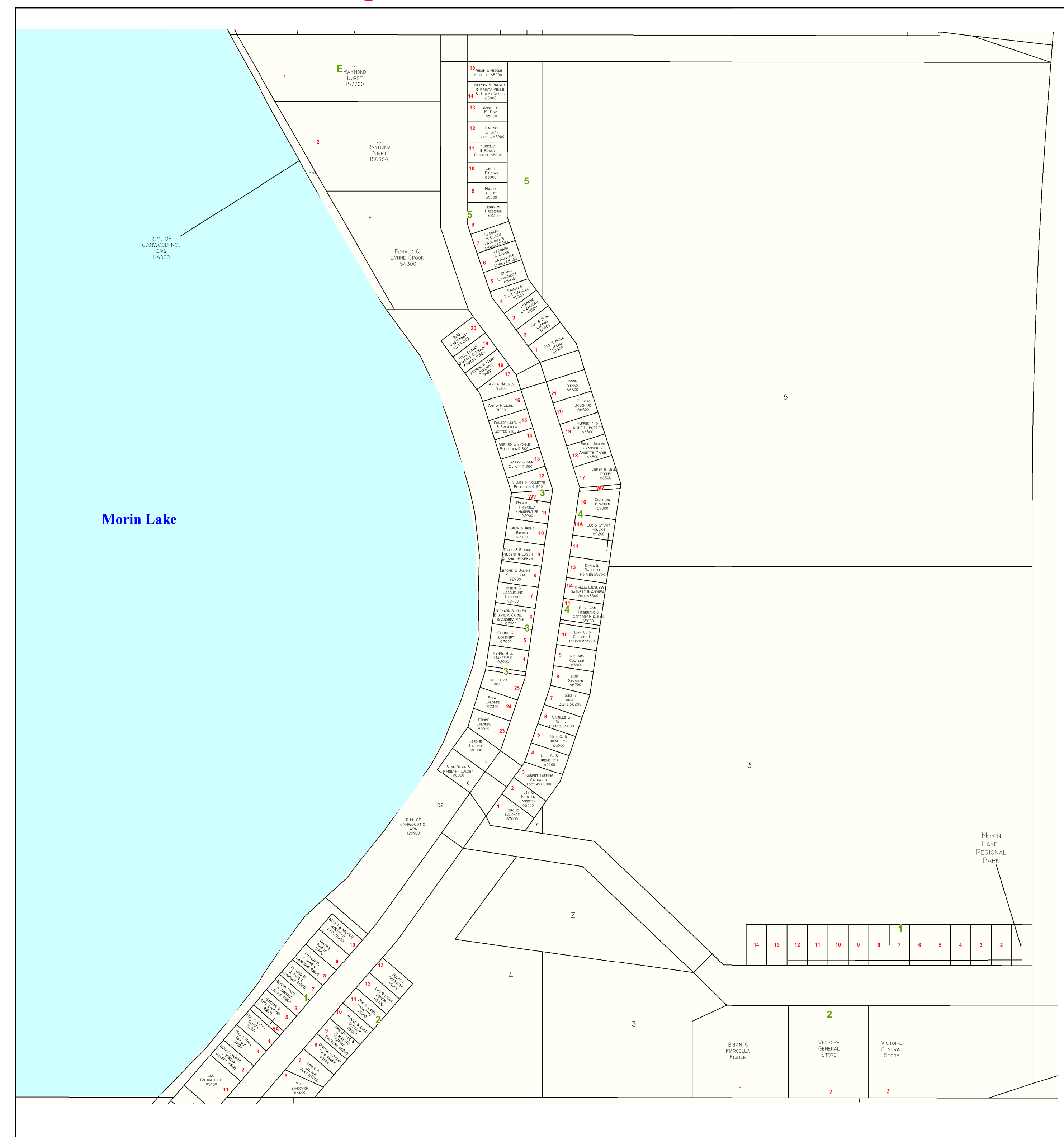
5A PRATT LAKE
Location NW 18 - 49 - 06 W3



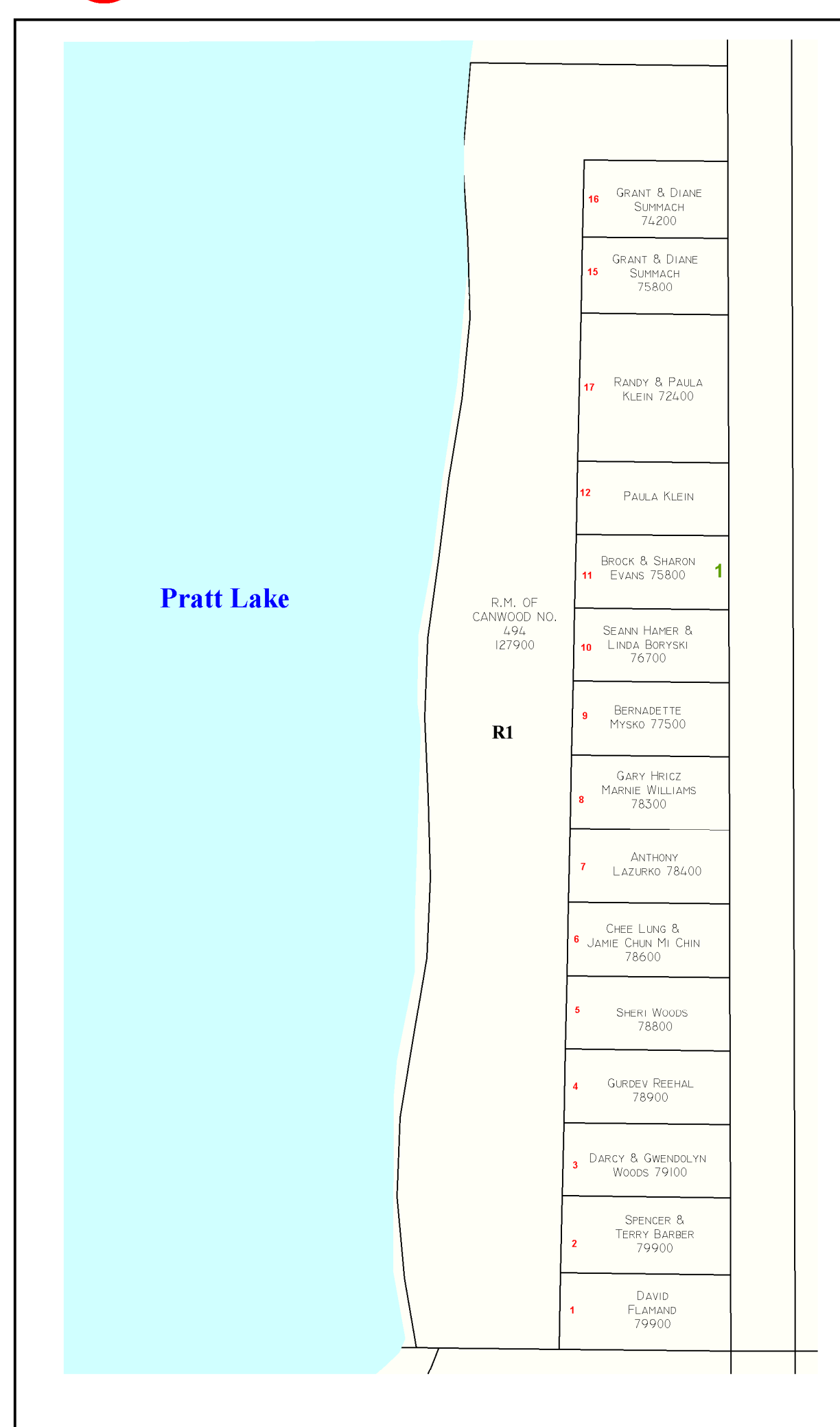
5B PRATT LAKE
Location NW 19 - 49 - 06 W3



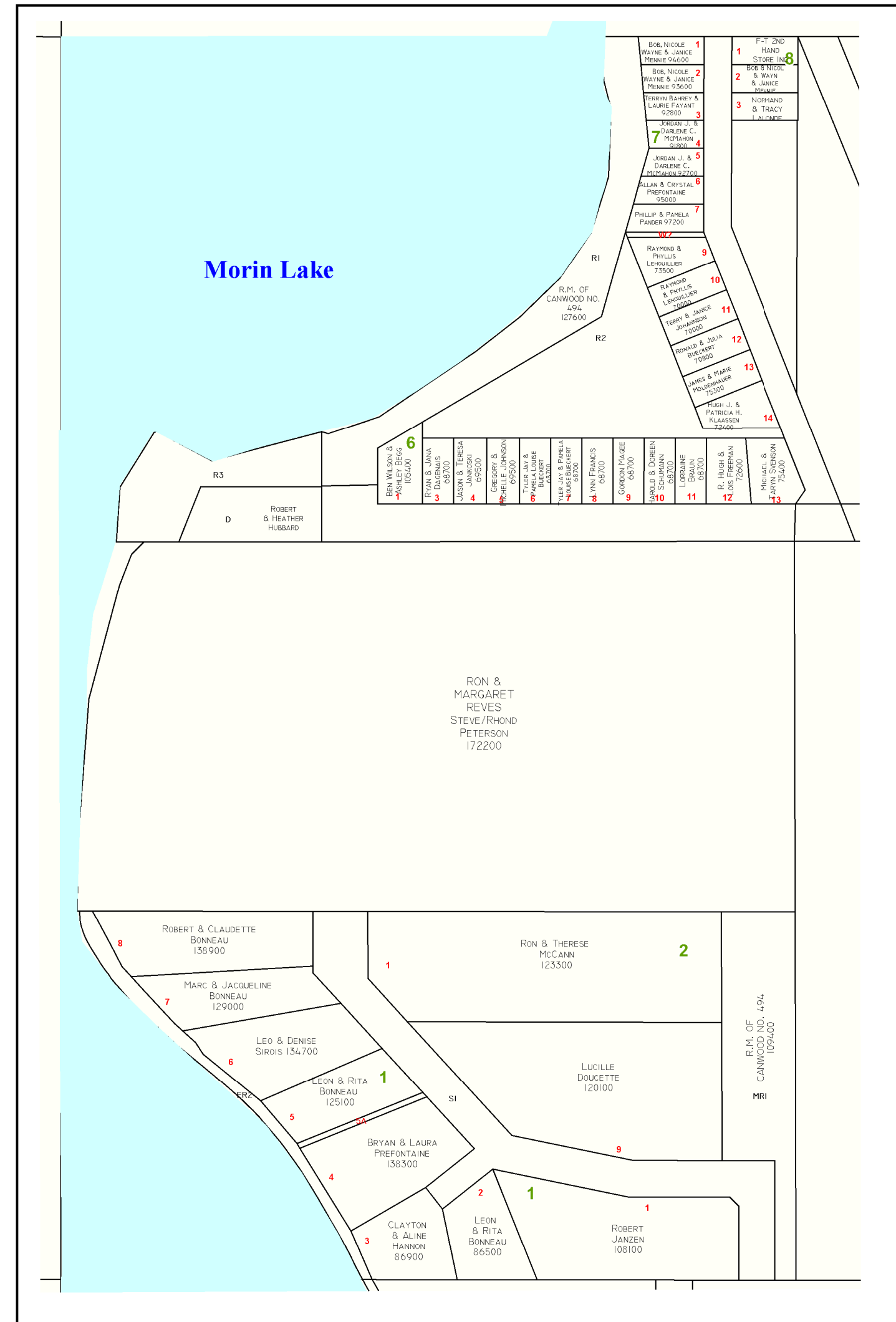
6C MORIN LAKE
Location SW 24 - 52 - 08 W3



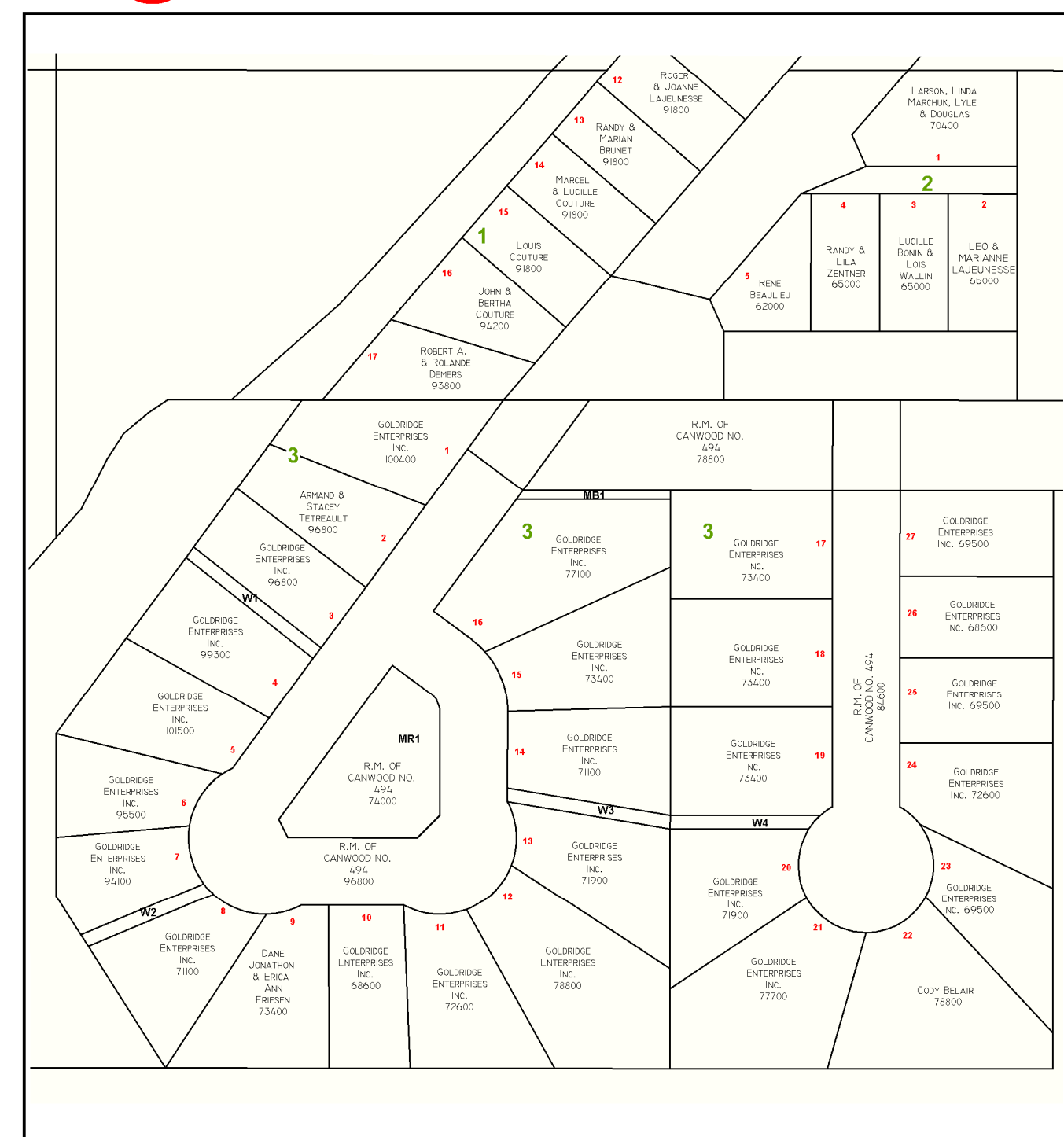
5C PRATT LAKE
Location SE 19 - 49 - 06 W3



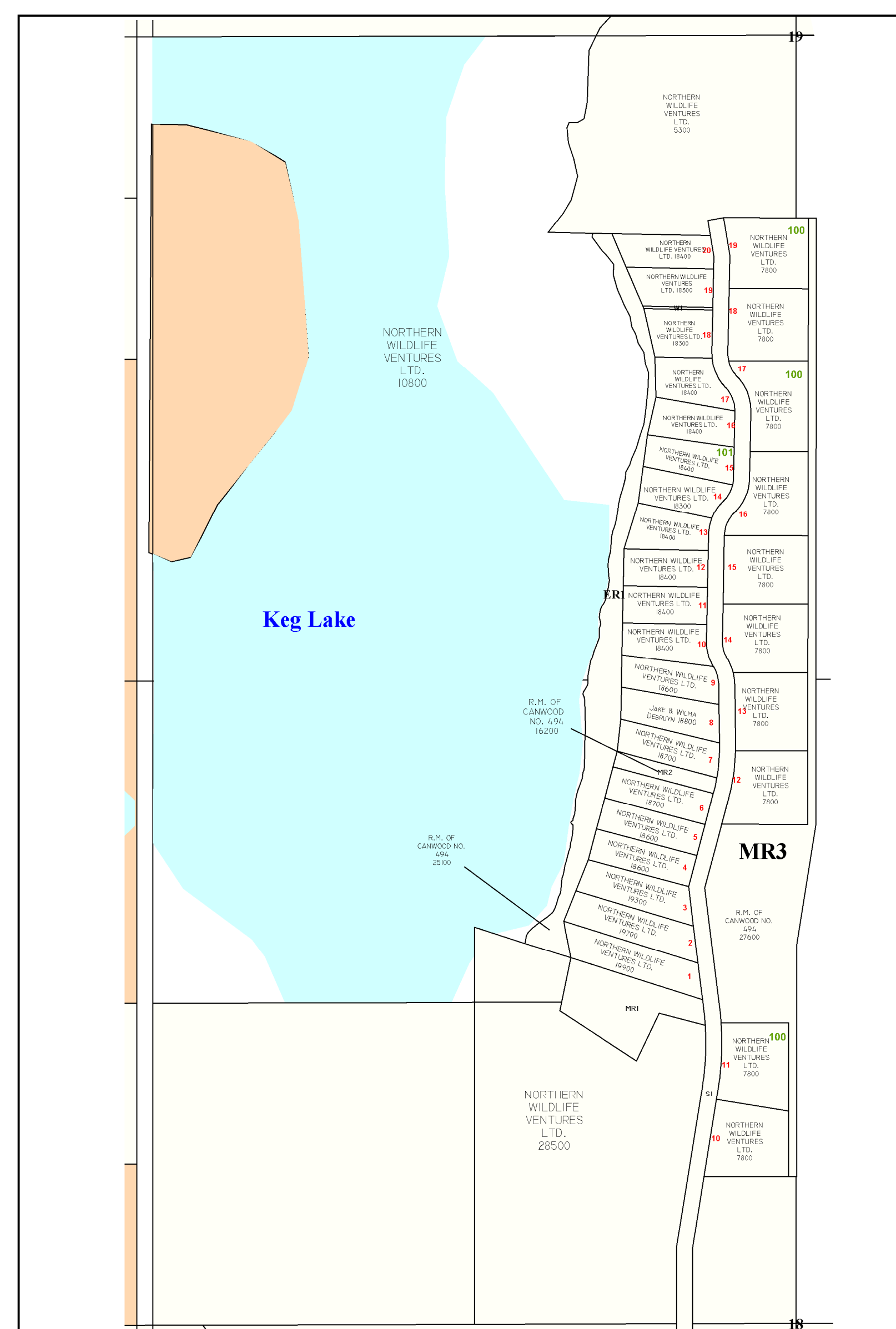
6A MORIN LAKE
Location NW 24 - 52 - 08 W3



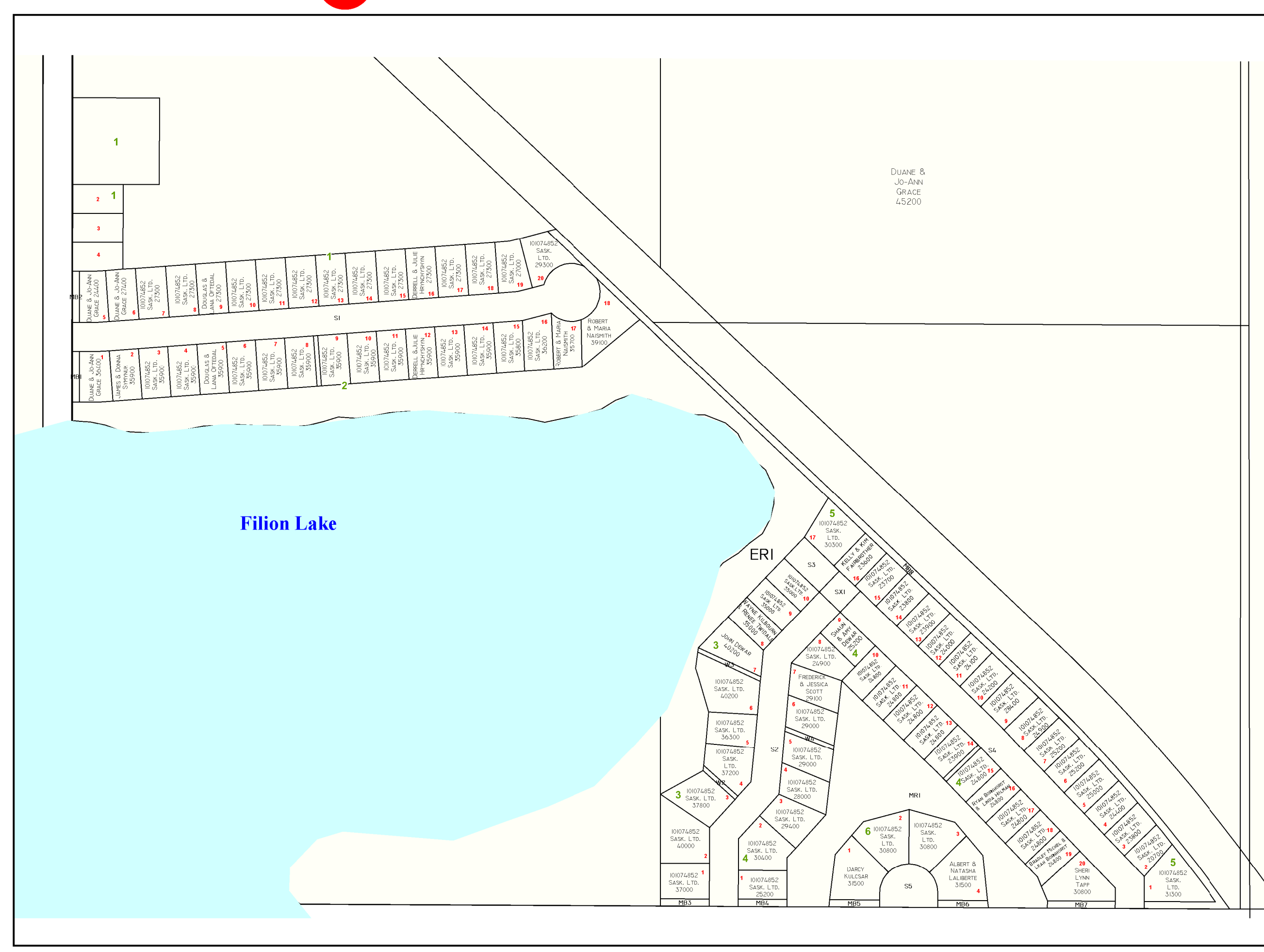
6B MORIN LAKE
Location NW 13 - 52 - 08 W3



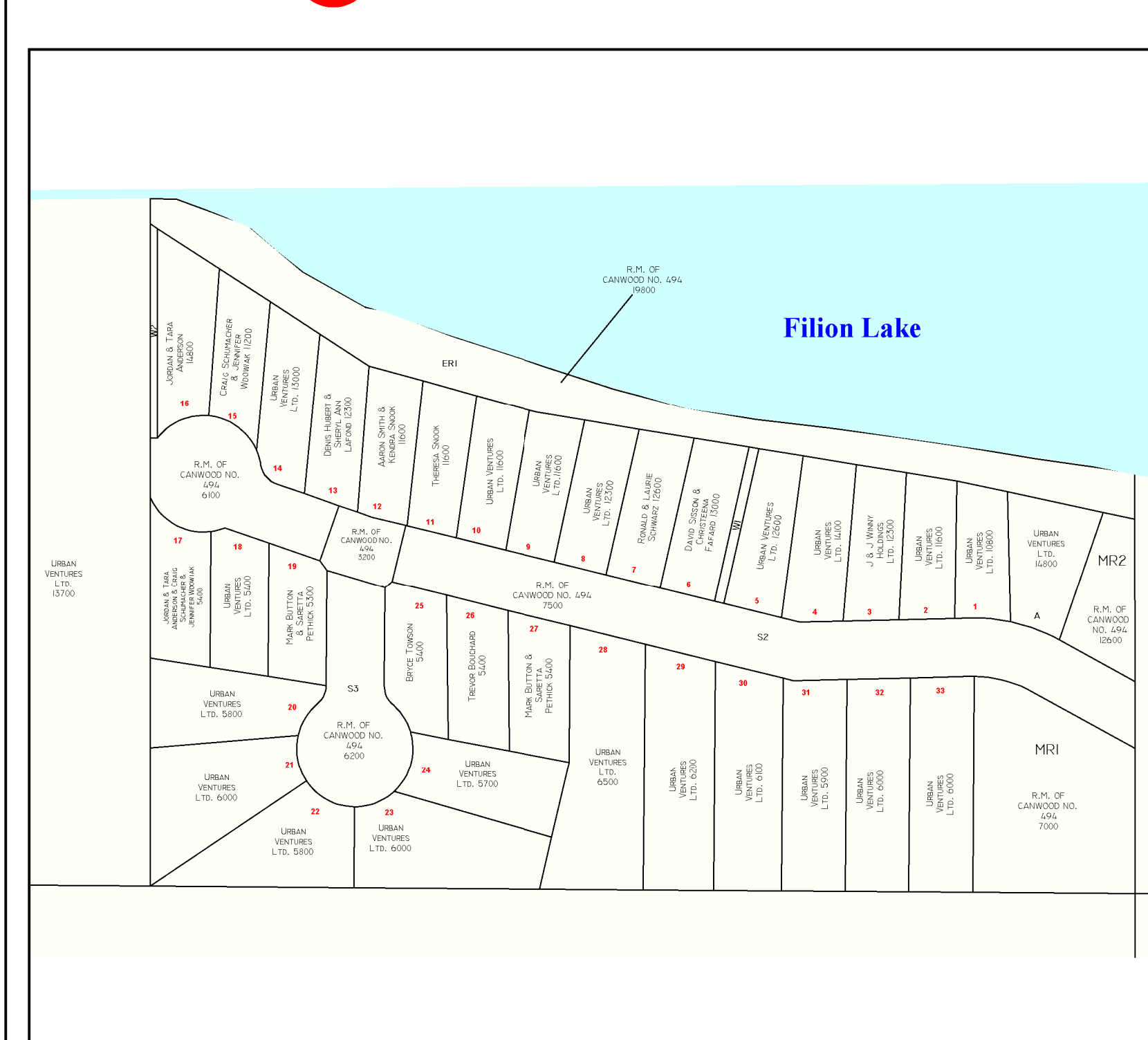
8 KEG LAKE
Location NW 18 - 53 - 07 & SW 19 - 53 - 07 W3



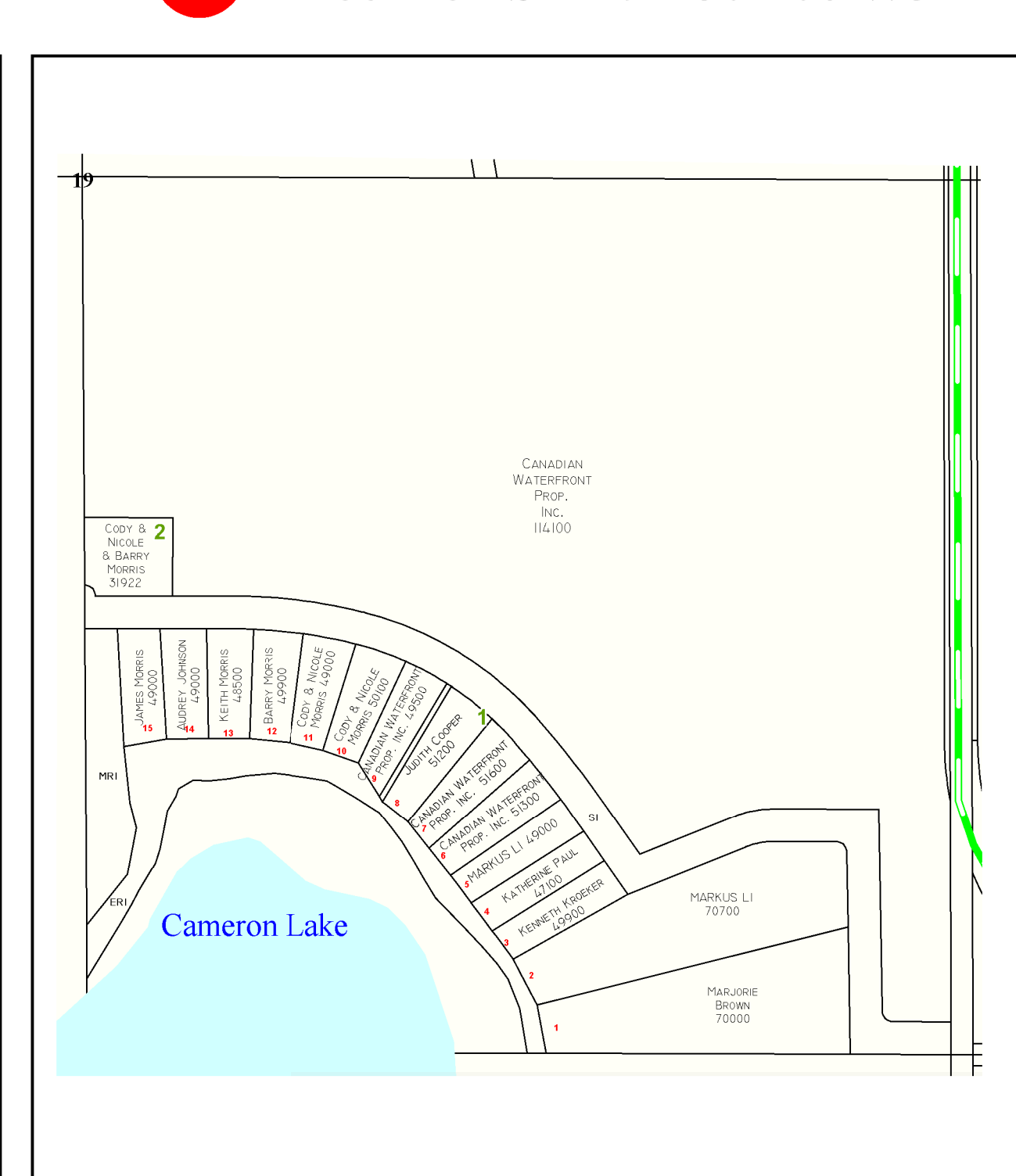
7A FILION LAKE
Location SW 30 - 52 - 04 W3



7B FILION LAKE
Location NE 27 - 52 - 05 W3



9 CAMERON LAKE
Location SE 19 - 50 - 06 W3



Note:
This map has been produced by MuniSoft for the R.M. Canwood No. 494 using information supplied by others.
Geospatial data and geographic data Copyright © Municipality of Canwood. All rights reserved.
Information Services Corporation of Saskatchewan for the production of this map under license to the municipality.
Duplicate in whole or in part is prohibited. It is the responsibility of the user to verify the accuracy of the information
shown changes in assessment, ownership and other information may have changed since the time of printing. EAGLE
Update: May 2019

